

## Working together for successful solutions.

To be successful in the brewery business, a manufacturer of brewery equipment and engineering company must provide effective and customer-oriented process solutions. This includes the exchange of experience and the understanding of customer requirements. In this way we develop customized equipment and process systems that work efficiently right from the start.

### Clear lines of responsibility

Under the lead management of a GEA Group company the information exchange with the customer is effective and reliable – from the first feasibility study to the engineering up to the installation and commissioning of the new plant. Experience and in-depth know-how of

our engineers are supplemented by professional project teams and high-quality production facilities. In any phase of the joint project, they develop perfect, trend-setting solutions, from components to turnkey breweries.

### Reliability of a competent partner

The companies of the GEA Group provide their customers with the reliability of a global enterprise in every respect. We want to be more than technical experts – major projects require economic solidity, innovation power, reliability and adherence to delivery dates. Only in this way do we create solutions that ensure quick and lasting success for our customers.



## About the GEA Group

The GEA Group Aktiengesellschaft is one of the largest system providers for food and energy processes. As an internationally operating technology group, the company focuses on process technology and components for demanding production processes in various end markets. The group generates about 70 percent of its revenue from the long-term growing food and energy industries.

GEA Group is a market and technology leader in its business areas – half of all beer produced worldwide is likely to have passed through at least one GEA component.



### GEA Process Engineering

#### GEA Brewery Systems GmbH

Locations:  
Heinrich-Huppmann-Str. 1, 97318 Kitzingen, Germany  
Phone +49 9321 303-0, Fax +49 9321 303-603  
Am Industriepark 2–10, 21514 Büchen, Germany  
Phone +49 4155 49-0, Fax +49 4155 49-2770  
sales.brewerysystems@geagroup.com, www.gea-brewery.com

#### GEA Diessel GmbH

Steven 1, 31135 Hildesheim, Germany  
Phone +49 5121 742-0, Fax +49 5121 742-153  
info.geadiessel.de@geagroup.com, www.geadiessel.com

#### GEA Wiegand GmbH

Einsteinstr. 9–15, 76275 Ettlingen, Germany  
Phone +49 7243 705-0, Fax +49 7243 705-330  
info.gewi.de@geagroup.de, www.gea-wiegand.com

### GEA Refrigeration Technologies

#### GEA Refrigeration Technologies GmbH

Dorstener Str. 484, 44809 Bochum, Germany  
Phone +49 234 980-0, Fax +49 234 980-2802  
info@gearefrigeration.com, www.gearefrigeration.com

### GEA Heat Exchangers

#### GEA Ecoflex GmbH

Karl-Schiller-Str. 1–3, 31157 Sarstedt, Germany  
Phone +49 5066 601-0, Fax +49 5066 601-105  
info.phe-systems.germany@geagroup.com, www.gea-phe.com

#### GEA EcoServe Deutschland GmbH

Schäferkampstr. 14, 59439 Holzwickede  
Phone +49 2301 96297-0, Fax +49 2301 96297-29  
info@gea-ecoserve.de, www.gea-phe.com

### GEA Mechanical Equipment

#### GEA Tuchenhagen GmbH

Am Industriepark 2–10, 21514 Büchen, Germany  
Phone +49 4155 49-0, Fax +49 4155 49-2423  
geatuchenhagen@geagroup.com, www.tuchenhagen.com

#### GEA Westfalia Separator GmbH

Werner-Habig-Str. 1, 59302 Oelde, Germany  
Phone +49 2522 77-0, Fax +49 2522 77-2089  
www.westfalia-separator.com

## Perfect brewing solutions.



[www.geagroup.com](http://www.geagroup.com)



# The GEA Group has perfect solutions to all your brewing requirements.



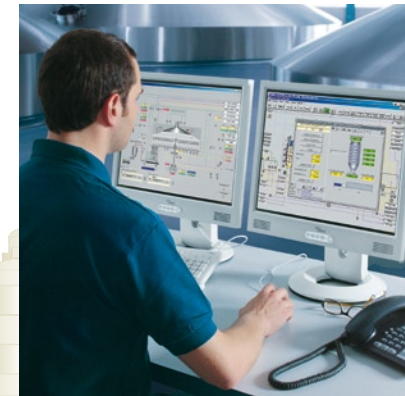
MILLSTAR™



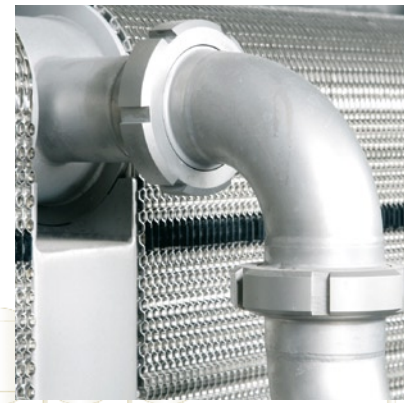
LAUTERSTAR™



CIP-plant



top: complete brewery  
bottom: process automation



top: refrigeration plant  
bottom: plate heat exchanger in a flash pasteuriser



top: beer dealcoholization  
bottom: separator



top: wort boiling  
bottom: energy recovery



top: ECO-MATRIX™  
bottom: yeast management YEAST-STAR™



top: water deaeration DIOX™  
bottom: CO<sub>2</sub> recovery

## OUR RANGE OF PRODUCTS AND SERVICES:

### Process technology for:

- Brewhouses
- Cold areas up to the bright beer cellar
- Complete turnkey breweries
- Refrigeration
- CO<sub>2</sub> recovery

### General engineering services:

- Pre-project studies
- Economic feasibility studies
- Tender document specification
- Technical & technological consulting

### Turnkey project management:

- Quality control
- Cost & time control
- Risk management
- Health and safety procedures

### Project engineering:

- Basic & detail engineering
- Process technology
- Process automation
- Refrigeration
- Training and documentation
- Installation
- Site supervision
- Commissioning
- Civil engineering
- Architectural design
- Layout concept
- Plant construction

### Components:

- Valves
- Flow-metering technology
- In-line process connections
- Cleaning technology
- Plate heat exchangers
- Pumps
- Pipe connectors
- Extension compensators

### Units:

- MILLSTAR™
- Carbonation
- Nitrogenation
- Water deaeration
- Mixing
- Blending
- Yeast pitching
- Wort aeration
- Sugar dosing

### Systems:

- JETSTAR™ boiling
- LAUTERSTAR™
- High-gravity brewing
- Immobilized yeast
- Pasteurization ECO-FLASH™
- CIP technology
- Hot, trub and cold wort separation
- Green beer separation
- Separation before filtration
- Beerfiltration with PROFIL®

### After-sales service:

- Audits
- Spare parts delivery
- 24-hour support
- Maintenance concepts